



GODFREY PHILLIPS  
—INDIA LIMITED—

DELIVERING  
EXCELLENCE

**INTERNATIONAL  
BUSINESS DIVISION**

CIGARETTES | LEAF & CUT TOBACCO | CONFECTIONERY

[www.godfreyphillips.co](http://www.godfreyphillips.co)

**Business Enquiries**





At Godfrey Phillips India's International Business Division, we continuously strive for excellence, aiming to exceed expectations and set new industry standards. We take pride in our commitment to responsible and sustainable business practices, always with a people and planet-friendly approach. Our dedication is to delivering quality, innovation, and a promise of unparalleled satisfaction to our global partners.

**Dr. Bina Modi**  
Chairperson & Managing Director



A Fortune 500 India company listed in the Bombay and National Stock Exchange



2nd largest cigarette manufacturer in India



520+ exclusive distributors



800,000+ retail partners



2 state-of-the-art manufacturing facilities in India

## About Us

**•Flagship of Modi Enterprises-** KK Modi Group: Godfrey Phillips India (GPI) takes pride in being the cornerstone of the esteemed global conglomerate, Modi Enterprises - KK Modi Group. With diverse interests, we have solidified our position on the global stage.

**•Pioneering Tobacco Manufacturing and Distribution:** GPI is amongst the world's foremost manufacturers and distributors of tobacco products. Our extensive global footprint resonates with the popularity of iconic cigarette brands such as Four Square, Red and White, Cavanders, Focus, Stellar, Tipper, North Pole, and the legendary Marlboro under a licensing agreement with Philip Morris.

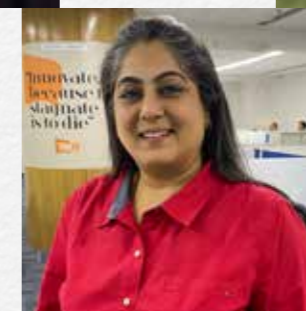
**•International Business Expertise:** Our International Division has cultivated valuable partnerships across the international tobacco industry. This enables us to export our signature cigarette brands, cut & blended tobacco, tobacco leaves, and offer technical services and contract manufacturing. Our global reach spans the Middle East, Africa, Asia, Europe, Australia, and Latin America.

**•Diversification into Retail and Confectioneries:** Beyond tobacco, we have ventured into the dynamic 24X7 retail space and the delectable world of confectioneries, expanding our product portfolio and embracing new challenges.

**•Business Responsibility and Sustainability:** We anchor our operations in a commitment to responsible business practices, emphasizing sustainability. Our philosophy revolves around putting people first, ensuring that every aspect of our business embodies our dedication to both global excellence and a better world.

**•Welcome to Godfrey Phillips India** - where tradition meets innovation, and global reach meets ethical business.

## Meet Our Team



What sets us apart? Expertise honed through years, the power of true professionalism, and an unwavering commitment to quality. From product marketing to contract manufacturing, cut tobacco, smoke analysis, and more, our strength is evident. We understand our clients and consumers, delivering excellence with integrity. It's in our DNA for over 75 years.



# *From seed to smoke*

*we offer experience and expertise*

PROVIDING END-TO-END SOLUTIONS

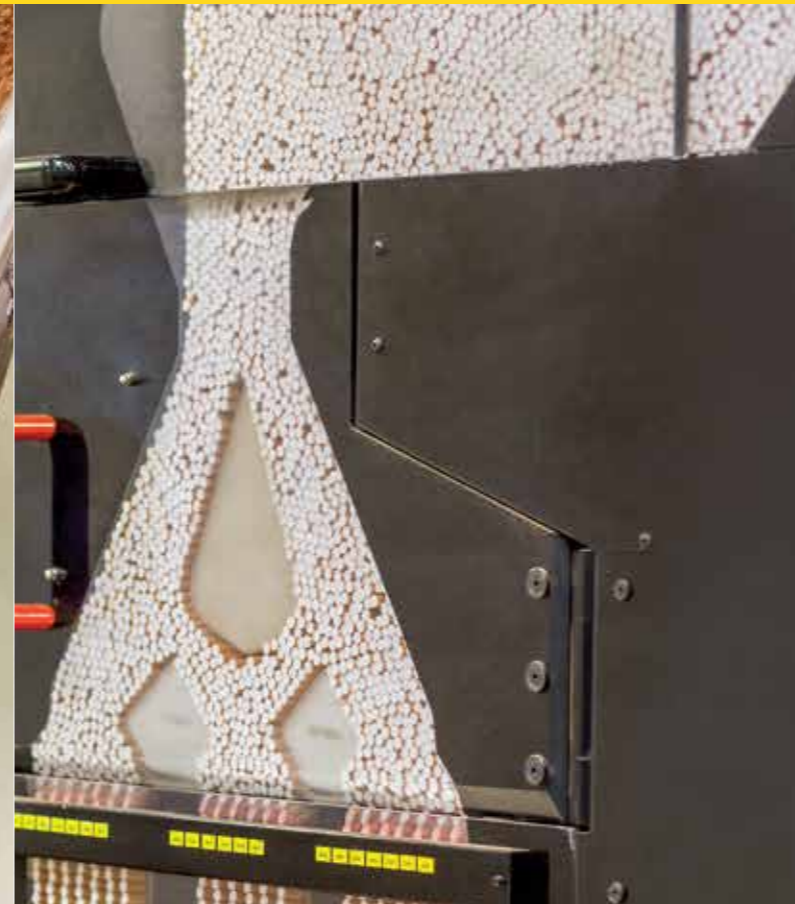
LEAF PRODUCTION &  
PROCUREMENT



LEAF PROCESSING &  
BLENDING



CIGARETTE  
MAKING



CIGARETTE  
PACKAGING





## Quality Manufacturing, Quality Products



### INTERNATIONAL STANDARDS

'Excellence and Quality' is our mantra and reflected in the technology, processes and certifications of the manufacturing units.

#### ISO 9001

Quality Management System

#### ISO 14001

Environmental Management System

#### ISO 45001

Health and Safety

#### ISO 50001

Energy Management System

#### ISO 17025-2017

Laboratory standards

#### ISO 27001-2013

Information Security Management System

#### Contract manufacturing experts with world class facilities

Our cigarette manufacturing units located in Rabale, Navi Mumbai and Guldhar, Ghaziabad have top brass technology partners like Philip Morris, G.D., Comas, SMC, Luwa, Forbes Marshall, Honeywell, Miebach, Nefab, Kaesar, and the Haulotte Group. Our units also have top international certifications. The Guldhar factory is the first one in the tobacco industry to have a Social Accountability 8000 certification and best processes including Six Sigma, TQM, Haichi Ban, 5 S and Kaizen.

- Automatic Storage and Retrieval System (ASRS) for all raw materials, a first in Asia
- Storage Capacity: approx. 3000 tons
- 12 packers and 9 makers including GDX6, X2NV, X300, GD121 & Focke at Rabale factory
- 18 packers and 16 makers including GDX6, X2NV, X2S, X300, Focke.
- GD 121, Mark 9 and Protos at Ghaziabad factory



## Give your cigarettes our experience



**Cutting-Edge R&D Facilities:** Godfrey Phillips India is home to two state-of-the-art research and development facilities, housing India's top scientists, cigarette designers, blenders, and flavorists.

**International Accreditation:** The Insight Tobacco Craft Institute stands proudly as the first laboratory in the Indian tobacco industry accredited with ISO 17025 certification and holds recognition from the Government of India's Department of Science and Technology.

**Tobacco Expertise:** Our expertise extends to three types of tobacco - Virginia or Flue-cured, Burley, and Oriental - skillfully merged to create an exquisite balance of tradition and modern science.

**Customized Blends:** We excel in tailoring cigarette blends to cater to the diverse palates of both our domestic and global customers, while ensuring compliance with various international regulatory requirements.

## Satisfaction at one's fingertips

At Godfrey Phillips India, we not only champion our own exceptional cigarette brands but also extend our manufacturing capabilities to support other brands. With our expertise in custom Cut Tobacco blends, we meet diverse global demands, ensuring products achieve the highest standards of excellence.

Our state-of-the-art recon manufacturing plant is where we produce the finest reconstituted tobacco, carefully blended during the cut filler creation process, ensuring our cigarettes meet international standards. Backed by our R&D division, we employ some of the sharpest minds to craft the perfect flavors, designs, and blends. At our Insight Tobacco Craft Institute, we master the delicate balance of art and craft, seamlessly merging traditional tobacco selection and blending with cutting-edge scientific processes and advanced filtration techniques.

### Cigarette Packs

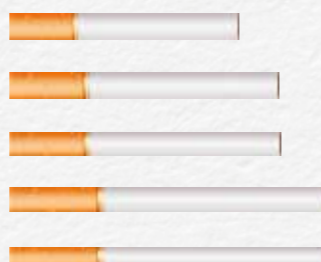
From king size to regular, non-filter to special menthol and charcoal filter, from HLP packing to bevel edged, we provide the right solution for a variety of tobacco brands.

#### Cigarette Filters

- Charcoal
- Mentholated
- Capsule flavors
- Regular
- Recess

#### Cigarette Dimensions

- Regular Size - 69 mm
- King Size - 84 mm
- Semi Slim - 84 mm
- 100 mm - 100 mm
- Super Slim - 100 mm



## Pack Formats

### 100 mm Format

This format is for people who want a long lasting smoke.

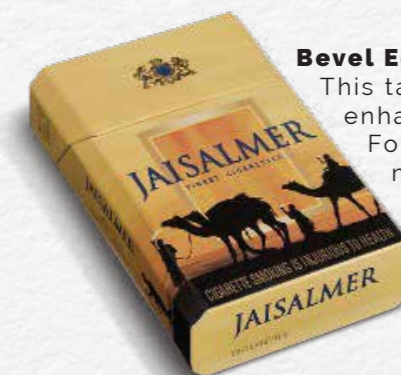
### Semi Slims Format

King Size format with a larger diameter as compared to the Super Slims cigarettes.



### Round Corner Packs

Premium end packaging for top end market. The vertical corners of the cigarette pack are smoothly rounded for a top grade look.



### Bevel Edge Packs

This tapered edge format to enhance the brand image Format in multiple markets, in India and overseas.



### Square Pack Format

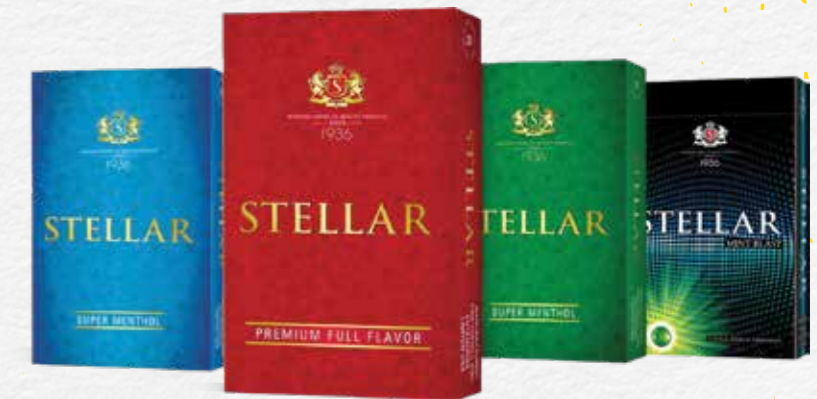
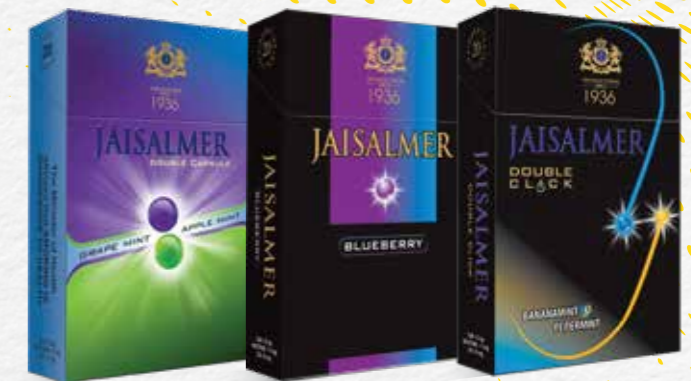
Universally popular, this is a classic format that'll be in style, always.

## World's favourites, our pride





World's favourites, our pride



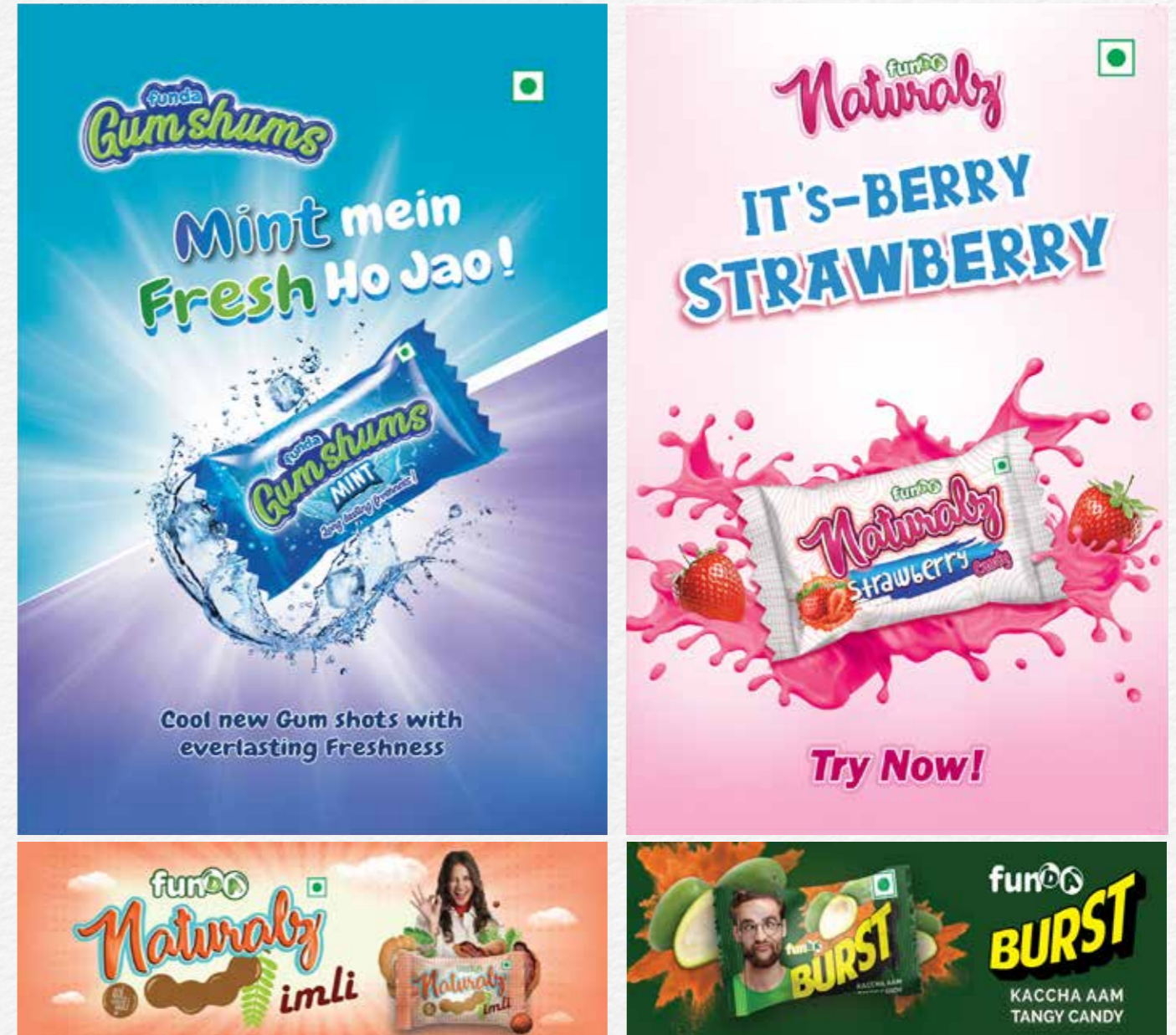


## Leaf and Cut Tobacco



- **Tobacco Sourcing Excellence:** At Godfrey Phillips India, our pursuit of quality tobacco begins at the source. We operate an independent 'Leaf Division' located in the tobacco-rich region of Guntur, Southern India, ensuring access to the finest tobacco varieties available.
- **Advanced Processing Facilities:** To meet the demands of both domestic and international markets, we've equipped our operations with two state-of-the-art Threshing Plants. These facilities employ cutting-edge technology to process tobacco, maintaining the highest standards of quality.
- **Vast Manufacturing Capacity:** With the capacity to produce over 50,000 tons of Cut Tobacco, we stand prepared to fulfill the unique requirements of global clients. Our extensive capabilities allow us to manufacture composite leaf blends and cut tobacco, meeting the specific needs of large clients worldwide.
- **Precision Quality Control:** To create the ideal blend, our manufacturing division relies on a state-of-the-art quality control setup. This includes sophisticated nicotine and sugar estimation auto analyzers, ensuring consistency and excellence in our products.
- **Sustainable Farming Practices:** We not only source tobacco responsibly, we also endeavour to empower and uplift the tobacco farmer community. We collaborate closely with local farmers to implement Good Agricultural Practices, fostering enhanced productivity and improved tobacco quality. We are deeply committed to cultivating tobacco free of chemicals and pesticides, reflecting our dedication to sustainable practices.
- **Global Tobacco Reach:** Our commitment to quality has earned Godfrey Phillips India recognition among some of the industry's largest manufacturers, including Philip Morris, ITG, JTI, Eastern Co., European Tobacco, and more. As a testament to our commitment to excellence, we are proud to be the first leaf operations company to receive the ISO-9001 certification.

## The Sweet Success of Diversification



At Godfrey Phillips India, our unwavering commitment to relentless innovation propels us to explore new horizons. While our roots in the tobacco industry run deep, we thrive on the challenge of diversification.

In 2008, we embarked on an exhilarating journey into the competitive confectionery sector, introducing FunDa candy with innovative Indian flavors. In 2018, our confectionery range further expanded, unveiling the trailblazing Naturalz Imli candy. Made with the finest tamarind pulp, it offers a harmonious blend of sweet and tangy flavors that evoke cherished childhood memories. These unique offerings have captured the hearts of consumers of all ages, setting new standards for quality and taste.

But our quest for exploration knows no bounds. We're pushing the envelope and venturing into exciting new territories, including the world of chewing gum, with FunDa Gumshums Mint – a one-of-a-kind, innovative delight that continues to captivate our audience.

Dedicated to satisfying the diverse Indian palate, our confectionery team has crafted a wide array of flavors, from tangy orange to kachcha aam, with thrilling new additions on the horizon. And now, we have introduced the distinct taste of strawberry, a unique creation from the house of Naturalz Imli. As we move forward, we remain committed to sweetening your life with our delightful confectionery offerings.





For us, sustainability isn't just a concept; it's woven into the very fabric of our business. We are deeply committed to ensuring that our operations are both people and planet-friendly. As a sustainable organization, we are committed to minimizing our environmental impact and promoting sustainable practices, empowering farmer communities, retailers, and hawkers, and ensuring a safe, healthy and growth-oriented workplace for our people. Our legacy of care extends to all our stakeholders, which includes our farmer community, factory workers, employees, retailers, investors, and every life linked to ours.

We firmly believe that the true essence of progress lies in the harmony between responsible business practices and a commitment to the environment. Our dedication goes beyond mere words—it reflects in empowering our employees to flourish, supporting our partners in their journey of prosperity, and actively contributing to a cleaner and greener planet. With this commitment, we are fostering a sustainable future that benefits everyone.

**We bring people 'Together For A Better Tomorrow'.**

---





[www.godfreyphillips.co](http://www.godfreyphillips.co)

**Business Enquiries**

**Registered Office**

Godfrey Phillips India limited,  
"Macropolo Building"  
Dr. Ambedkar Road,  
Mumbai – 400 033  
Maharashtra, India

**Manufacturing Units**

Godfrey Phillips India limited,  
Plot No. 19, MIDC, TTC Industrial Area,  
Rabale, Navi Mumbai - 400 701,  
Maharashtra, India

**Leaf Division**

Godfrey Phillips India limited,  
Four square house,  
D. No.: 4-5-15/5/B1, Vidya Nagar,  
3rd Lane, Guntur – 522 007  
Andhra Pradesh, India

**Corporate Office**

14, Omaxe Square,  
Jasola District Centre, Jasola,  
New Delhi – 110 025,  
India

Godfrey Phillips India limited,  
Delhi- Meerut Road, Guldhar,  
Ghaziabad - 201003  
Uttar Pradesh, India

**Recon Office**

Godfrey Phillips India limited,  
Plot No. 289-300,  
APIIC Growth centre  
Gundlapally – 523 211  
Ongole, Andhra Pradesh, India

**For International Business queries: [exportsales-gpi@modi-ent.com](mailto:exportsales-gpi@modi-ent.com)**